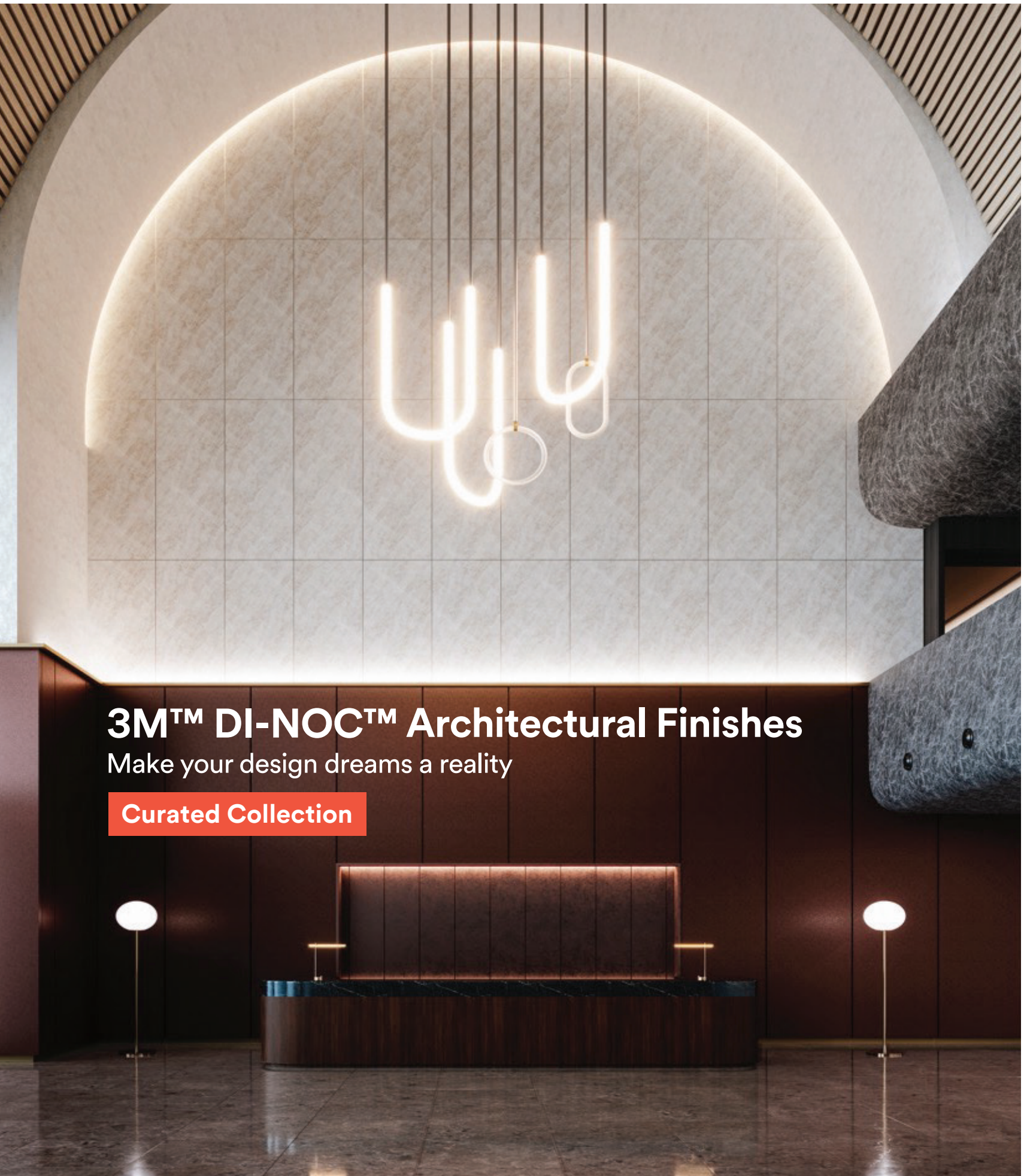


3M™ DI-NOC™ Architectural Finishes

3M™ DI-NOC™ Architectural Finishes

Make your design dreams a reality

Curated Collection



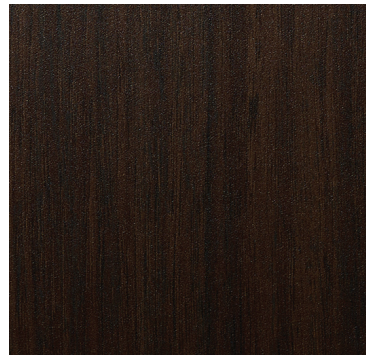
Fine Wood



FW-236



FW-237

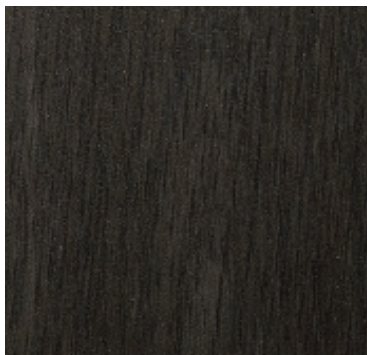


FW-330EX

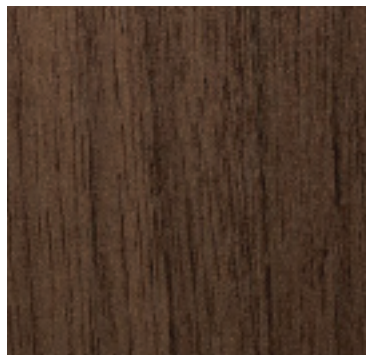
EX



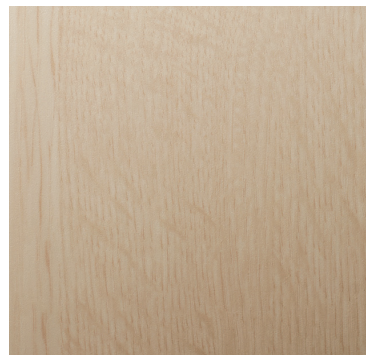
FW-1122



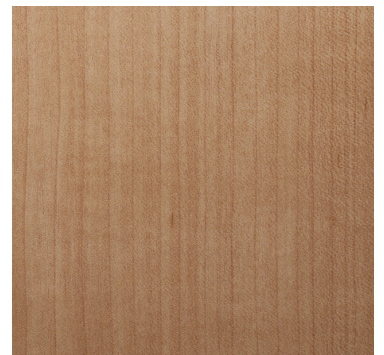
FW-1127



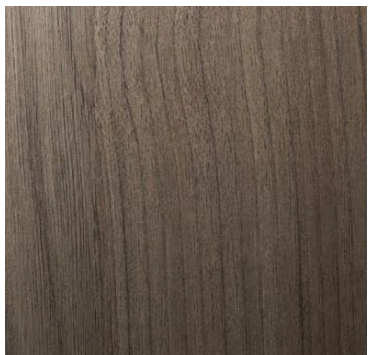
FW-1022



FW-1255



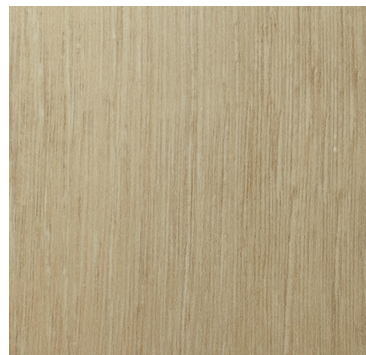
FW-1262



FW-1983



FW-1987



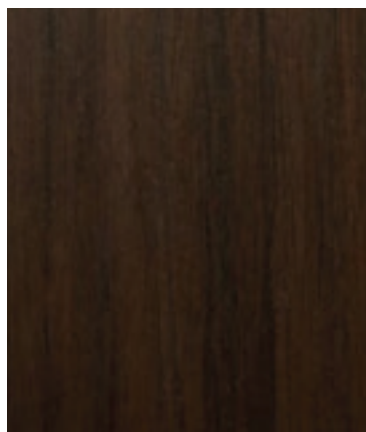
FW-2421



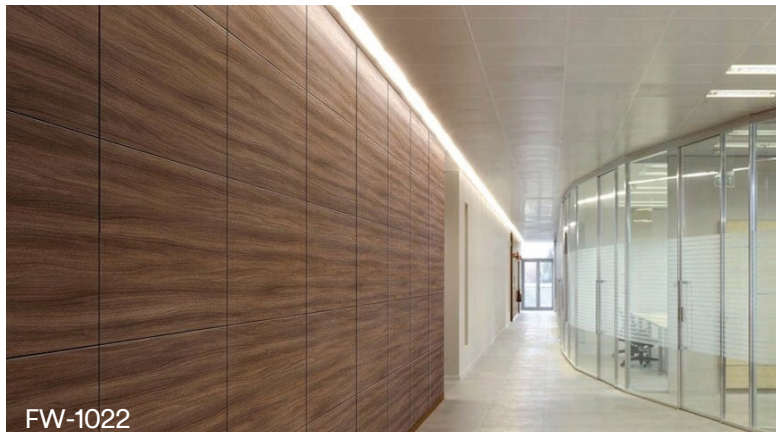
FW-2423



FW-7017



FW-7009



FW-1022

Note:
Actual product colour may vary from the digital image due to differences in displays.
Please request for a physical sample if a colour match is critical.

Wood Grain



WG-696



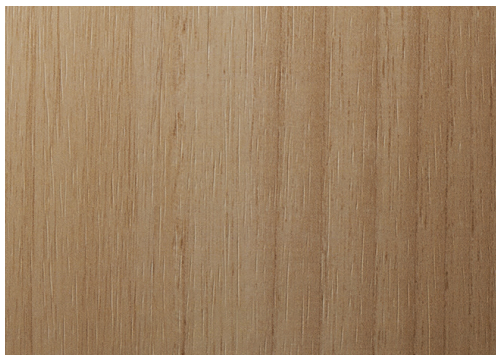
WG-841



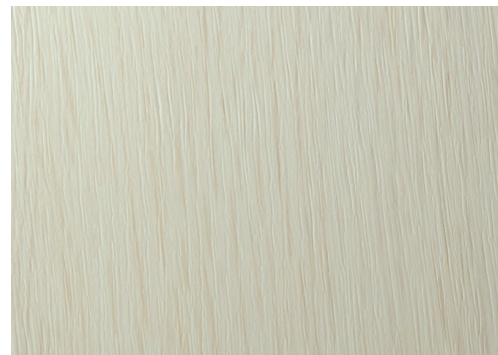
WG-960



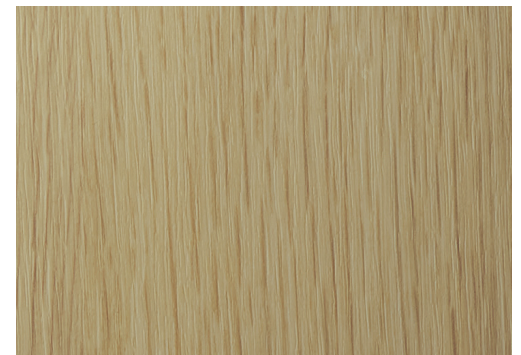
WG-1708



WG-1840

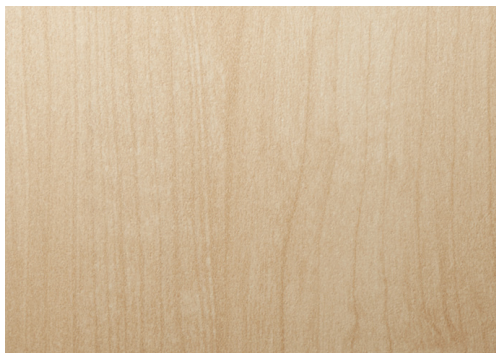


WG-2430



WG-2431

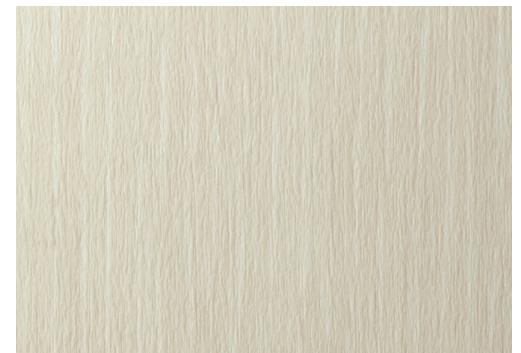
Dry Wood



DW-2200MT



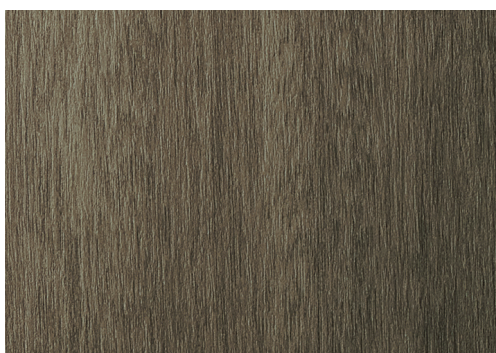
DW-2208MT



DW-2470MT



Premium Wood



PW-2321MT



PW-2323MT



PW-2323MT

Earth Stone



AE-1632



AE-1637



AE-1638



AE-1643



AE-1719



AE-2160



AE-2500MT



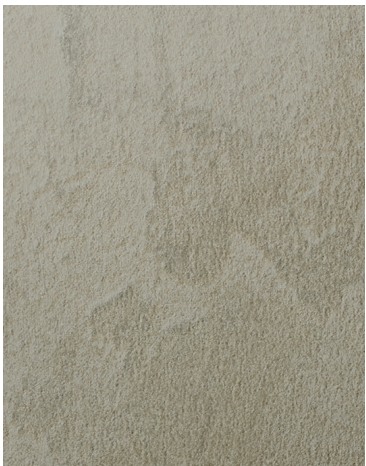
AE-2504



AE-2506



AE-2508



AE-2510



AE-2511



AE-1638

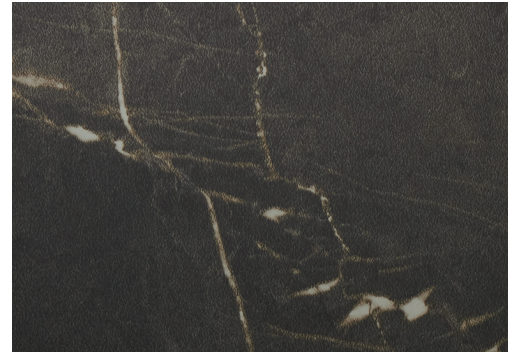
Stone



ST-1831



ST-2530MT



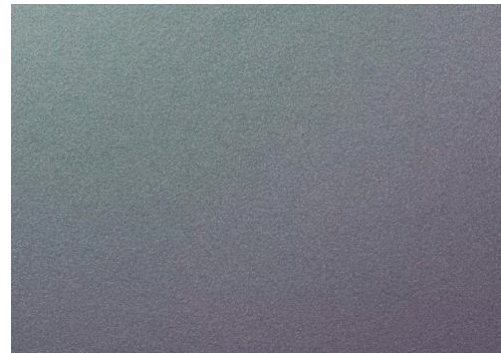
ST-2538MT



Concrete Mortar



CN-2512



ET-1772



ET-1775

Effect

Nuno Textile



NU-1786



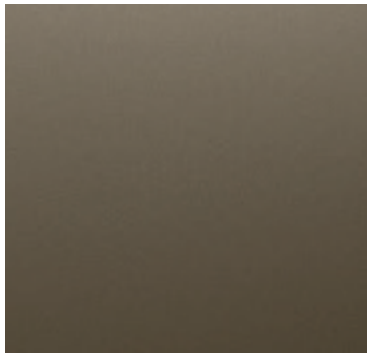
NU-1792



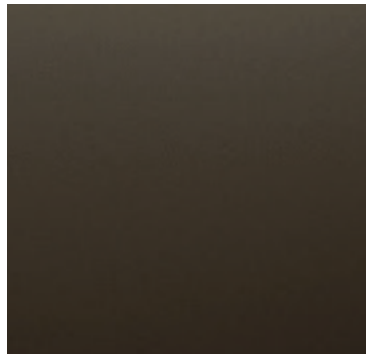
NU-1941MT



Metallic



PA-181



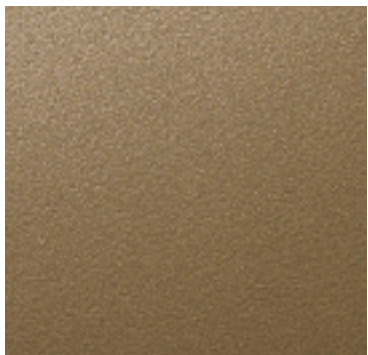
PA-183



PA-320



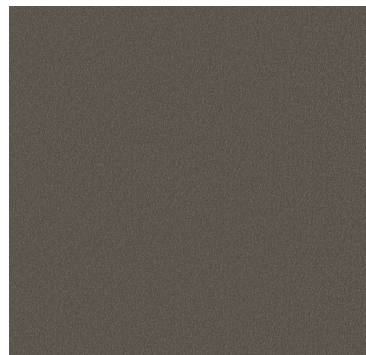
PA-390



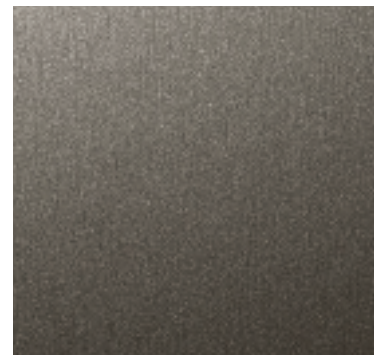
PA-683



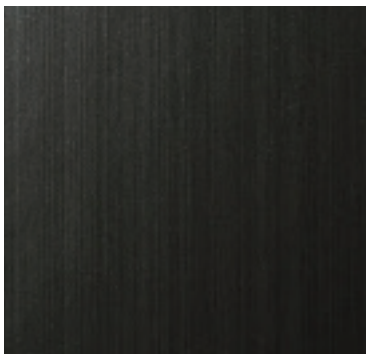
ME-147



ME-391



ME-396



ME-379



ME-432



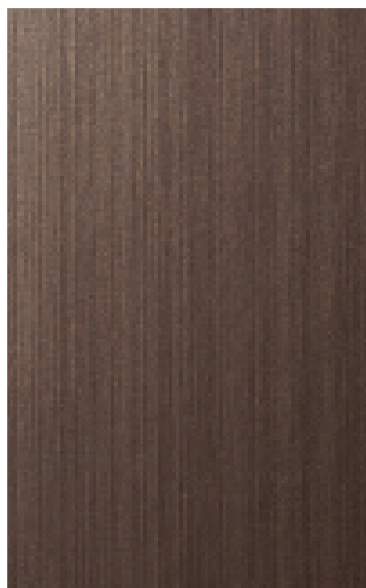
ME-486



ME-904



ME-1223



ME-380



ME-380

Metallic



ME-1225



ME-1685



ME-1997



ME-2022



ME-2025



ME-2551

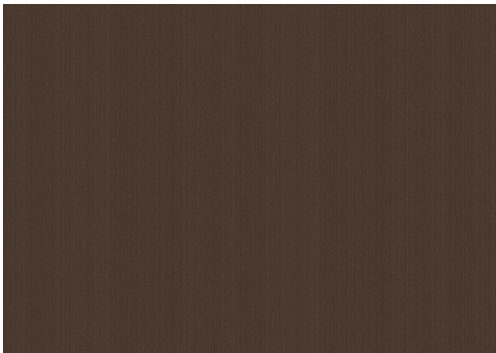


ME-2564



ME-2565

Premium Metal



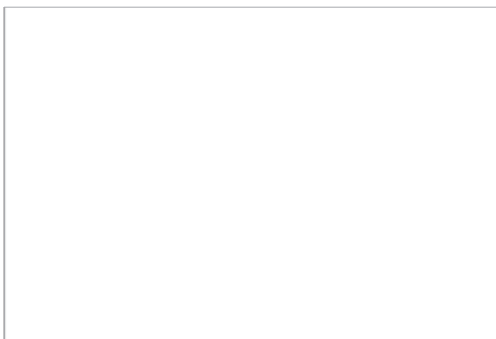
VM-305



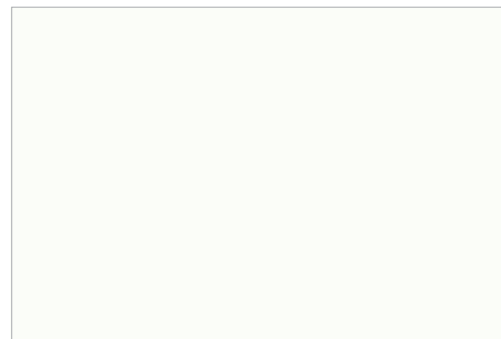
✕ PS-007AR

Abrasion Resistant

White Board



PWF-500



✕ WH-111



PWF-500

Single Colour



PS-022



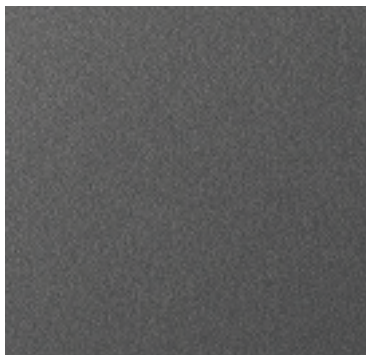
PS-503



PS-910



PS-949



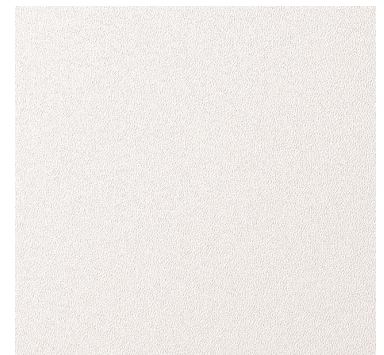
PS-950



PS-952



PS-957



PS-959



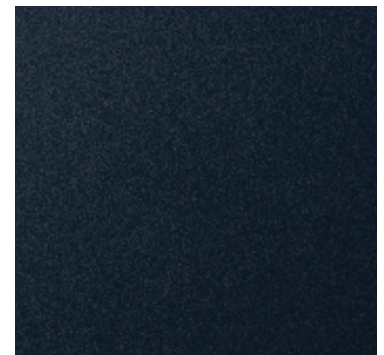
PS-975



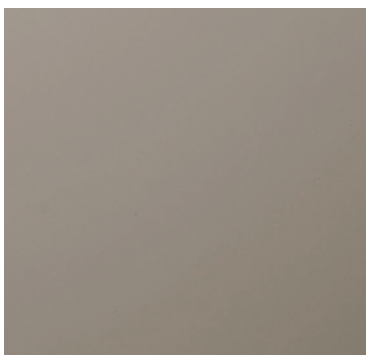
PS-1185



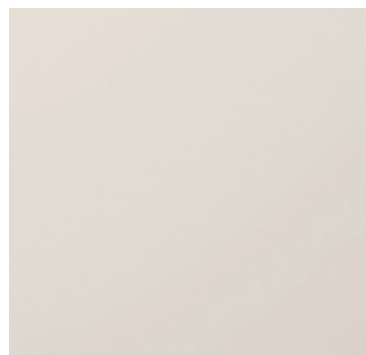
PS-1187



PS-1825



PS-3095MT



PS-3864MT



PS-3904MT



- EX EX Series: for exterior applications
- ✓ Use caution when applying to 3D compound curved surfaces
- ✗ Not suitable for 3D compound curved surfaces

Technical Information

Product Description

3M™ DI-NOC™ Architectural Finishes are decorative surface finishes for interior and exterior applications, available in 1000+ designs. These decorative films are easy to install and conform to a variety of flat or curved surfaces including walls, panels and ceilings. From industrial concretes to elegantly aged woods; vibrant pops of colour to rich marbles, 3M DI-NOC Finishes marry innovative aesthetics and intelligent design.

Featured Benefits of DI-NOC Architectural Finishes

- Interior Applications - Ideal for casework, doors, columns, walls and more.
- Exterior Applications - Ideal for façades, window frames, doors, columns, walls and more.
- Application Surfaces - Use on metal, wood, glass and more.
- Aesthetics - Resemble natural materials and other types of surfaces to deliver the look you want.
- Remodel and Reuse - Goes up fast, with less likelihood of error and waste, and brings life to existing assets. The architectural finishes convert wood or metallic spaces to reflect an entirely new design with abstract or colored finishes.
- Easy Application - 3M™ Comply™ Adhesive technology virtually eliminates bubbles, simplifying and speeding application. It also bonds powerfully to many substrates.

DI-NOC Series Selection

It is important to consider the intended use when selecting DI-NOC patterns. Please refer to the most up-to-date 3M™ DI-NOC™ Architectural Finishes Technical Data Sheet and Installation Guide, which can be found by visiting 3MArchitecturalMarkets.com. You may also contact JESTAC, 3M Authorized Distributor for additional information.

Product Characteristics

The values in these tables are typical, and are based on test data deemed reliable but are not warranted.

Characteristic		Value
Material	Film	Vinyl for most patterns; Polyolefin for E-series; Polyester for select patterns such as WH-111
	Adhesive	Pressure-sensitive acrylic, permanent
	Release Liner	Silicone-coated poly paper
Thickness	Film + Adhesive	8 mils (200 microns) nominal, not including release liner; Some designs vary slightly in thickness due to embossing
	Release Liner	6.2 mils (157 microns)
Roll Size	Standard & E Series	48 in. x 164 ft. (1220mm x 50m)
	AR, WG,-GN, VM, ET	48 in. x 82 ft. (1220mm x 25m)
Weight		55 lbs. (25kg) (approx.) for a 164 ft. (50m) roll

Product Performance

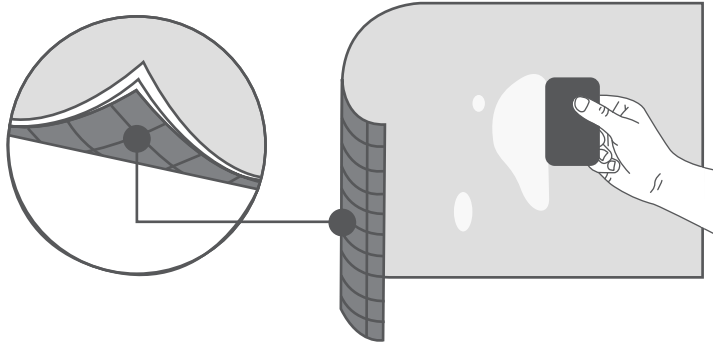
The values in these tables are typical, and are based on test data deemed reliable but are not warranted.

Characteristic	Evaluation	Results
Heat Resistance*	Aged at 150°F (65°C) for 28 days.	No delamination or visible change
Moisture Resistance*	Aged at 104°F (40°C), 95% humidity for 30 days	No delamination or visible change
Ultraviolet Light Exposure	Exposed to carbon arc accelerated UV light for 250 hours	No visible change
Abrasion Resistance	Taber® CS-17 Abrasion wheel: 1 Kg loading weight, 7,000 cycles	No wear-through of surface finish
Fire Resistance	When used in Interior Applications as defined by NFPA 101 “Life Safety Code”, Test Method ASTM E84	Most Products have Class A
Industry-Specific Testing	IMO Certification/USCG Type Approval, Intertek Firedoor, and CAN/ULC-S102.2	Contact 3M for certification details

* Product applied to an aluminium plate

Comply™ Adhesive Technology

Comply Adhesive has air-release channels that allow trapped air bubbles to escape during application. Dry application only.



Stain Resistance

Contaminant was in contact with the film surface for 24 hours and then removed using water or mild detergent. Results may vary.

Contaminant	Results
Coffee	●
Tea	○
Cola	●
Vinegar	●
Red Wine	●
Soap Solution (1%)	●
Ethyl Alcohol (50%)	●

● Removed with water
○ Removed with mild detergent

Cleaning and Maintenance

Regular cleaning will help maintain the appearance of the finish. Use mild detergent and water, and a soft cloth or sponge without abrasives. For difficult stains, spot clean with a diluted Isopropyl Alcohol solution and a soft cloth. Avoid using strong solvents or detergents that are either highly alkaline (pH>11) or acidic (pH<3). Do not use ammonia, chlorine, or strong organicbased cleaning products, polishing or cleaning compound, hard-bristle brushes or electric polishing equipment. Use only clean, nickfree tools and wipe gently.

Problem	Solution
Dust and grit	Wipe with a soft, damp cloth.
Soiled (but not gritty)	Use water and a soft cloth
Heavily Soiled	Clean first using a solution of mild liquid detergent and water, then use clear water. Wipe gently with a soft cloth.
Difficult Stains	Spot clean with 70/30 IPA (70% Isopropyl Alcohol/30% Water) cleaning solution.

Resistance to Solvents, Cleaners and other Chemicals


Film was applied to an aluminium plate, left for 72 hours, then immersed in the following chemicals:

Contaminant	Results	Immersion Time	Result
Water	Water	24 hours	No visible change
Acid	Chloride (10%)	24 hours	No visible change
	Hydrogen Peroxide	72 hours	No visible change
Base (Alkali)	Sodium Hydroxide 10%	24 hours	No visible change
Alcohol	Ethanol	24 hours	No visible change
	Isopropyl Alcohol	72 hours	No visible change

Application and Removal Guidelines

The values in this table are typical, and are based on test data deemed reliable but are not warranted. Refer to the 3M™ DI-NOC™ Architectural Finishes Installation Guide for additional information.

Characteristic	Value
Application Surface Type	Smooth, hard, non-porous (sealed) material
Application Location	Interior & Exterior (EX Series)
Application Temperature	54-100°F (12-38°C) air and application surface
Application Method	Dry Application
High Humidity Environments	Products are not recommended for Interior Applications where condensation consistently occurs.



Interested to use 3M™ DI-NOC™ Architectural Finishes for a refurbishment?
We are just a phone call or e-mail away.

JESTAC

T: 6288 8290 E: sales@jestac.com.sg W: www.jestac.com

Jestac is the only authorised distributor for 3M Architectural & Interior Solutions products in Singapore.