

ALTAC Aluminium Matting System

The ideal matting system for your specific needs.

DESCRIPTION

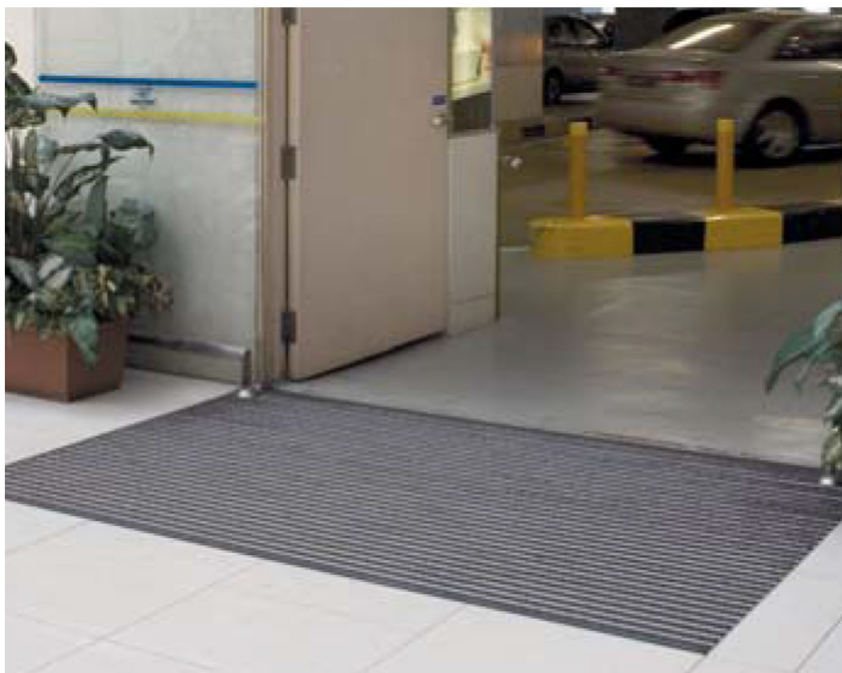
ALTAC Aluminium Mat is a rigid frame matting incorporated with 1" (width) INNER T Series carpet mat inserts which scrap, trap and hold dirt and soil for high traffic application. It is designed with flexible joints for easy roll-up and protected with sound dampening base.

FEATURES

- ◆ 100% polypropylene fibre imported from Europe, with superior wear resistance and good absorption capacity.
- ◆ Able to scrap, trap and hold soil and dirt.
- ◆ Applicable to high traffic public areas.
- ◆ Can be customized to various sizes and shapes to fit building entrances.
- ◆ Easy to clean and maintain with Flexible Joint System.

APPLICATIONS

- ◆ Entrances at commercial buildings, shopping malls, factories, hotels, airports, banks and country clubs etc.



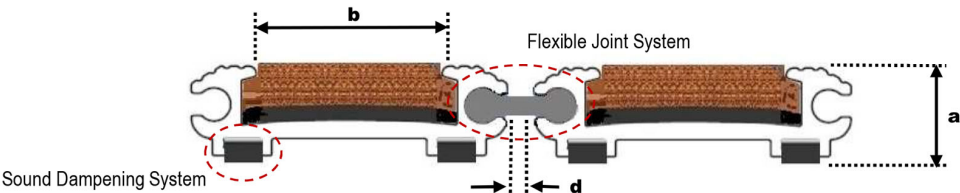


ALTAC Aluminium Matting System

The ideal matting system for your specific needs.

SPECIFICATIONS

Carpet Model:	INNER T Series
Size:	2m x 25m (can be customized)
Material:	Polypropylene
Backing Material:	Latex Backing
Fabric Weight:	1600g/m ² ±
Total Thickness:	11mm ±
Total Weight:	1900g/m ² ±
Colour:	Red / Black / Grey / Yellow



ALTAC Aluminium Matting System	Dimension
Matting Height (a):	17.0 mm
Carpet insert width (b):	25.0 mm
Aluminium Wall Thickness:	2.0 mm
Aluminium Panel Width (c):	42.5 mm
Space between 2 Panels (d):	3.2 mm



NOTE: ALTAC Aluminium Mat is installed in the recess-well with size tolerances as follows:
Panel direction: -4mm, +0mm Traffic direction: -4mm, +0mm