

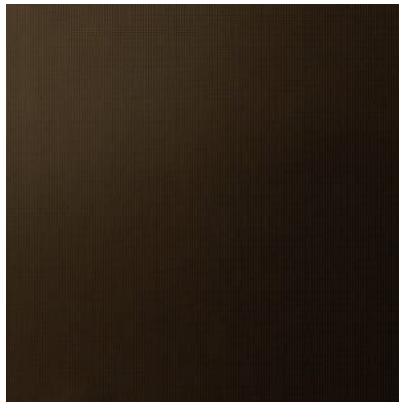
# 3M™ DI-NOC™ Finishes

Special Models Catalogue





AE-1643  
Industrial Texture



AM-1702  
Advanced Metallic



CN-1623  
Concrete/Mortar



FA-1678  
Ceramic / Tile



FA-690  
Haku / Washi



FW-1281  
Fine Wood



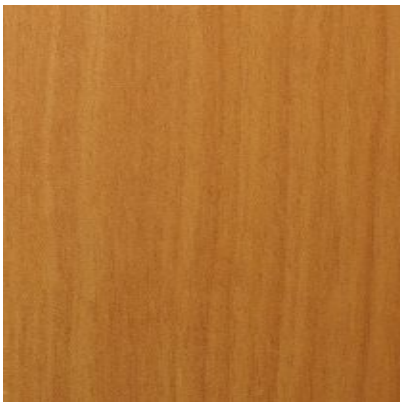
FW-233  
Fine Wood



FW-608H  
Fine Wood



FW-7008  
Fine Wood



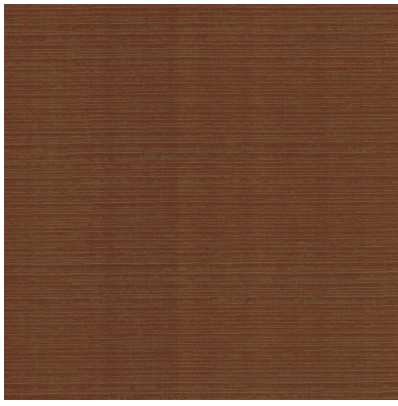
FW-795  
Fine Wood



HG-1205  
High Gloss



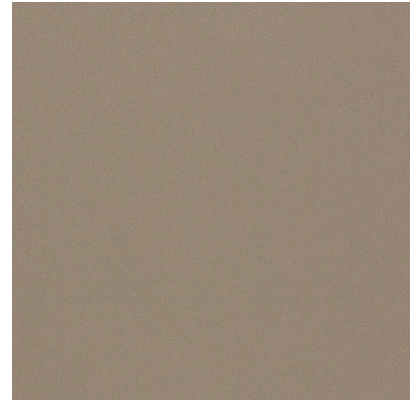
LZ-461  
Abstract



ME-5888  
Metallic Wood



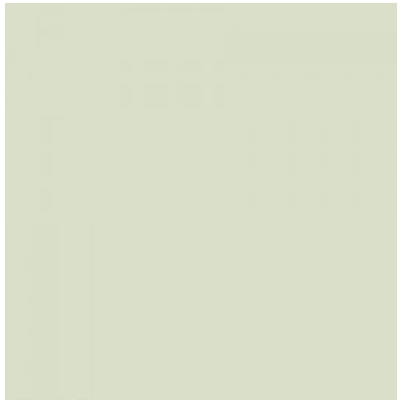
MW-1177  
Metallic Wood



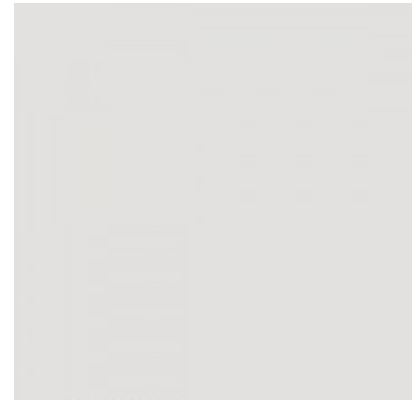
PA-039  
Metal



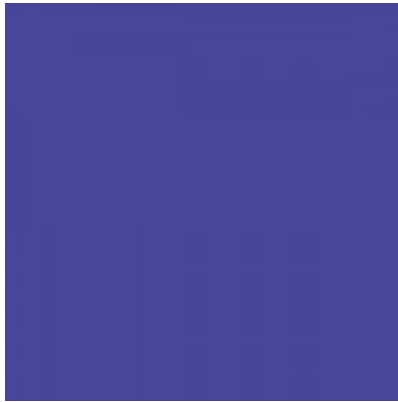
PA-320  
Metal



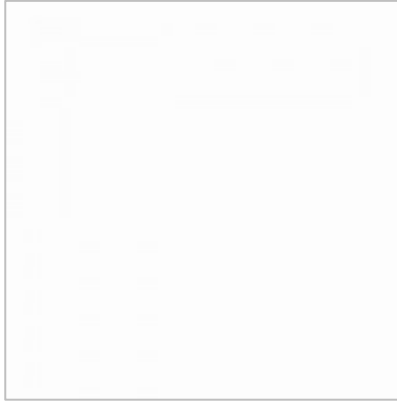
PS-116  
Solid Color



PS-1188  
Solid Color



PS-140  
Solid Color



PS-503  
Solid Color



PS-910  
Solid Color



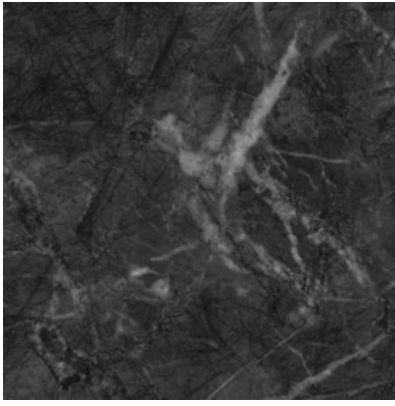
PS-955SR  
Solid Color



RT-1112  
Oxidized Metal



ST-1195  
Stone



ST-1587  
Stone



VM-1693  
Haku / Washi



WG-1369  
Wood Grain



WG-156  
Wood Grain



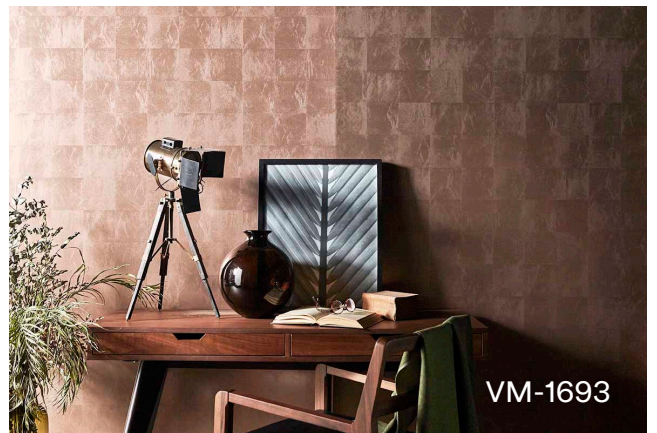
WG-2115  
Wood Grain



WG-659  
Wood Grain



ST-1587  
(Feature wall)



VM-1693

**Refresh surfaces and fixtures  
with less downtime using  
3M DI-NOC Film.**

Jestac Pte Ltd

Tel: 6288 8290

E-mail: [sales@jestac.com.sg](mailto:sales@jestac.com.sg)

Website: [www.jestac.com.sg](http://www.jestac.com.sg)

Instagram: @dinocsg

**JESTAC**



**Authorized Distributor  
Architectural & Interior Solutions**